



WEBERRESCUE
SYSTEMS

LET'S CREATE FUTURE ➤

TACTICAL TOOLS

**Special equipment
for tactical use**

TACTICAL TOOLS FOR SPECIAL USES

Special missions require special equipment!

Life-threatening operations against organised crime and international terrorism quickly push the forces and their equipment to the limit. Police and military forces are required to perform at their best on a daily basis. Conventional means of intervention can slow down operational readiness, as they are often training-intensive, maintenance-intensive, heavy and unwieldy. The point of entry into a building usually poses the first high risk to the officers on duty!

WEBER RESCUE SYSTEMS has taken on this problem and with the TACTICAL TOOLS series has developed solutions which increase the readiness for action and at the same time minimise the danger to life and injury of the emergency services. Easy noiseless handling, lightning-fast availability and when necessary, inconspicuous use. These are the main features of the new product line, which includes combi tools, hydraulic door openers and classic Method Of Entry tools such as Halligan tools and rams.

Our emergency services are committed to us! We at WEBER RESCUE SYSTEMS feel obliged to equip them with the best possible tools to ensure the success of the mission, but above all the health of the men and women who perform at their best every day.

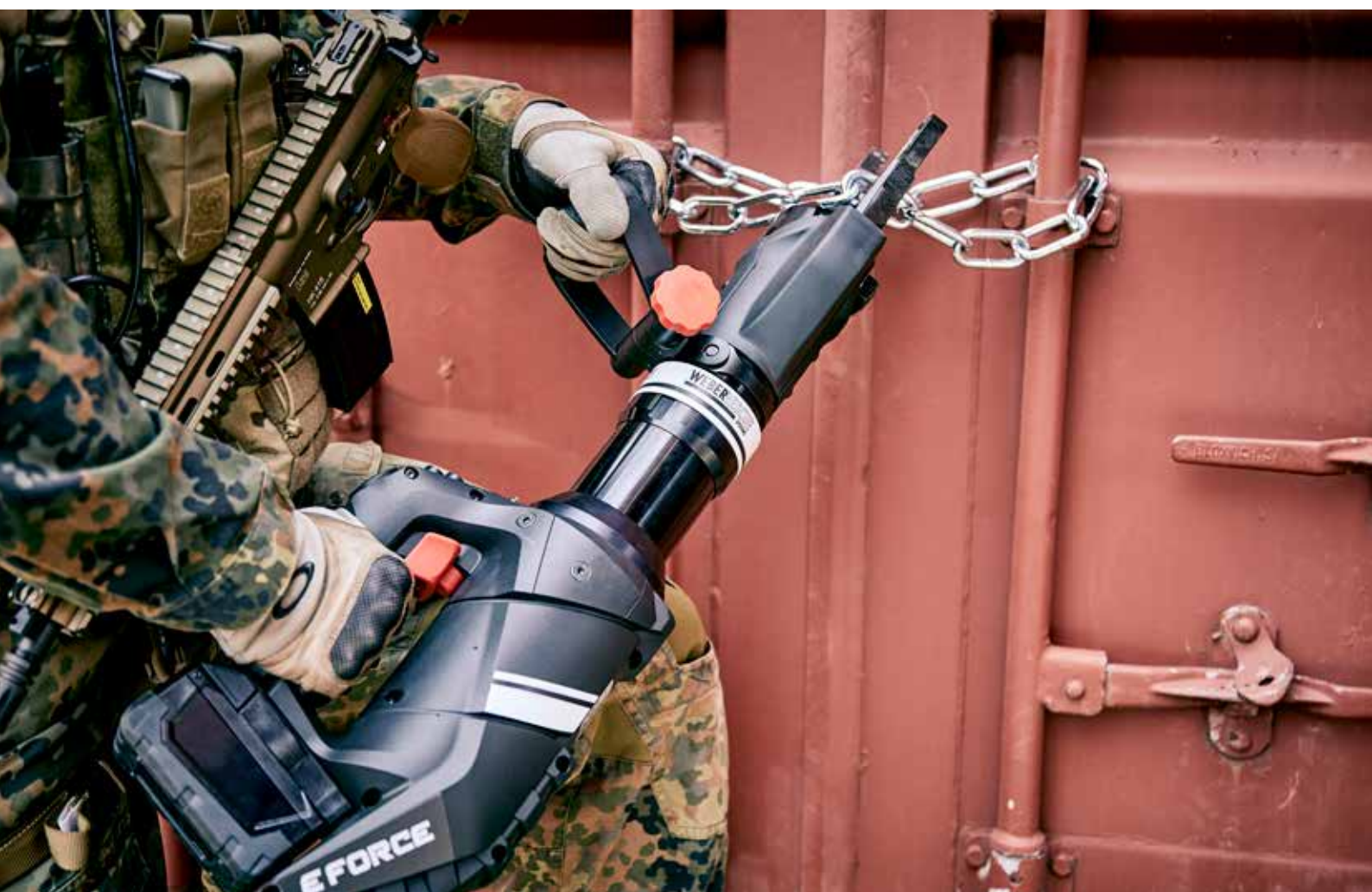
You require further assistance? Please get in touch with us via www.weber-rescue.com.



Scan QR code and
discover more!

CONTENTS

COMBI TOOLS AND SPREADERS	4
UNDERWATER USE	8
TRANSPORT SOLUTIONS	10
FORCIBLE ENTRY AND DOOR OPENING.....	12
ADDITIONAL EQUIPMENT.....	16



COMBI TOOLS AND SPREADERS

Combination devices enable cutting, spreading, pushing and pulling with just one device!

- Combination of spreader and cutter saves space and weight
- Can be combined with chain set and mechanical rescue ram
- Battery-powered tools with new, more efficient drive for more speed

Cordless spreaders offer a high degree of flexibility for the most demanding requirements. The removable tips with integrated peeling function and particularly non-slip design are fitted with spikes on the inside and outside. This means a better grip and prevents slipping.

Wrap-round handle
for easier handling

Extremely lightweight
and slim design for even
better handling

Spreader tips
tips with interior and exterior spikes
for extra grip



RIT-TOOL



scan/click
QR Code!

Flexible specialized tool for RAPID INTERVENTION TEAMS to provide quick forcible entry

- fully-featured battery combi tool with interchangeable tips depending on the application e.g. breaking doors and windows, cutting round steel and chains, lifting of loads, pulling obstacles, opening of vehicles (extrication)
- extremely high cutting and spreading forces
- pulling possible with optional pulling attachments
- free set composition possible
- rotating and folding handle for optimal handling

RIT-TOOL E-FORCE3



RIT-TOOL SMART-FORCE



Opening width	215 mm	215 mm
EN-class	AC140H-13,3	AC140H-14,3
EN cutting class (EN 13204)	1H-2H-3H-4H-5H	1H-2H-3H-4H-5H
NFPA class	A6-B7-C6-D7-E7-F3	A6-B7-C6-D7-E7-F3
Weight (ready to use**)	13.3 kg	14.3 kg
Part no.	1093377	1101159

**E-FORCE: Weight incl. battery 5.0 Ah Red Li-Ion™ | SMART-FORCE: Weight incl. IP 68 battery cover and battery 8.0 Ah M18™ High Output™

ACCESSORIES AND TIPS



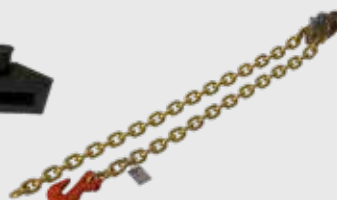
Spreader tip
Part no. 1050616



Door opener tip
Part no. 1096859



Special tip
Part no. 1051896



Chain set
Part no. 2819139



Pulling device
Part no. 2836033



RZM CRT Black Edition
Part No. 1094618 BLK

	Weight	Part no.
Spreader tip (2 pcs. required)	0.71 kg	1050616
Door opener tip (2 pcs. required)	0.94 kg	1096859
Special tip (2 pcs. required)	1.22 kg	1051896
Chain set	13.8 kg	2819139
Pulling attachment (2 pcs. required)	1.3 kg	2836033
Mechanical rescue cylinder RZM CRT Black Edition	7.8 kg	1094618BLK

HANDVARIO RIT-TOOL



Fully-fledged hand-operated combination tool for RAPID INTERVENTION TEAMS

- silent operation due to manual operation
- flexible use thanks to interchangeable tips and a wide range of accessories
- suitable for breaking open doors and windows, cutting round steel, chains, grids, lifting loads, pulling obstacles, opening obstacles, opening vehicles, etc.
- takes up little space, lightweight and can be used anywhere
- submersible up to 25 m
- free set configuration
- head piece can be rotated 360° for optimum working

Opening width	215 mm
EN classification	BK25/280G-11,1
EN cutting capacity (EN 13204)	1H-2G-3G-4H-5G
NFPA cutting class	A6-B7-C6-D7-E7-F3
Weight (ready for use)	11.1 kg
Part no.	1100441



SP 54 AS



GRIP

Latest generation of battery-operated spreader

- for flexible use, e.g. inside buildings and off-road
- opening width of the spreader combined with door-opener spikes enables the immediate pushing aside of heavy objects behind doors
- tips with interior and exterior spikes for extra GRIP
- wraparound grip for simpler handling and holding

SP 54 AS E-FORCE3



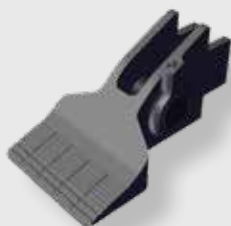
SP 54 AS SMART-FORCE



Spreading width	735 mm	735 mm
Spreading force (in the working area)	55 - 501 kN	55 - 501 kN
Max. crushing force	144 kN	144 kN
Range	620 mm	620 mm
Max. pulling power	70 kN	70 kN
EN classification	AS55/735-20,7	AS55/735-21,6
Weight (ready for use)	20.7 kg	21.6 kg
Part no.	1091736	1101469

****E-FORCE:** Weight incl. battery 5.0 Ah Red Li-Ion™ | **SMART-FORCE:** Weight incl. IP 68 battery cover and battery 8.0 Ah M18™ High Output™

DOOR OPENER TIP FOR SPREADERS



TIP!

Door opener tip for more functionality and extended application possibilities

- suitable for all WEBER RESCUE spreaders with removable tips
- captive bolts on the mounting fork for quick and simple attachment
- innovative design with additional spikes
- not available as a set - 2 tips are required per unit

Weight	1.29 kg
Part no.	1100623



UNDERWATER

SMART FORCE

MORE THAN A RESCUE TOOL.

Thanks to a robust, waterproof and dustproof housing, the new devices can be made submersible in just a few simple steps underwater in a few simple steps, and quickly and easily during use.

Whether fresh, salt or dirty water, thanks to the IP 68 design, work is possible even under extreme conditions, such as flooding or underwater use. When using the IP 68 battery cover, the device achieves protection class IP 68. This means that the device is approved for use under water up to a depth of 3 m for a duration of 60 minutes.



*INCLUDED IN THE STANDARD SCOPE OF DELIVERY
FOR SMART-FORCE DEVICES*



AKKUCOVER SMART-FORCE



All SMART-FORCE cordless rescue tools come with an IP 68 battery cover and an IP 54 battery cover for 5,5 Ah and 8 Ah M18™ High Output™ batteries

IP 68 AKKUCOVER

Robust, waterproof and dustproof housing for underwater use of SMART-FORCE devices

- suitable for fresh, salt or dirty water
- for extreme conditions, such as flooding or vehicle recovery under water
- quick set-up for underwater use

Part no.

1099894

IP 54 AKKUCOVER

To protect the battery from mechanical damage (moisture and splash water)

- device achieves protection class IP 54
- allows a quick battery change for regular use scenarios

Part no.

1099352

IP-BAG E-FORCE

E-FORCE**UNDERWATER**

Protective cover for underwater use of E-FORCE battery devices

- enables the use of battery-powered devices under water
- additionally protects against dirt and contamination
- simple and fast application as well as preparation of the devices after an underwater use
- furthermore excellent fingertip control of the control rocker
- automatic pressure relief valve
- scope of delivery including storage bag
- two available sizes for a wide range of battery devices (scan QR code)



	IP-BAG SMALL (grey)	IP-BAG LARGE (green)
IP-class	IP 58	IP 58
Permissible depth	< 10 m	< 10 m
Part no.	1101496	1101497



RIT BACKPACK CARRIER



For easy transport of E-FORCE battery-powered devices and Handvario combi tools on the back

- quick on and off due to quick release fasteners
- no restriction of the freedom of movement of the head when wearing a helmet
- two pockets offer additional space for batteries, tips and other accessories
- optimal weight distribution ensures optimum carrying comfort even over longer distances
- tough and durable material (Cordura nylon with water-repellent coating)
- suitable for RIT-Tool, Handvario RIT-Tool and Handvario SPS 270 H

Dimensions	864 x 304 x 165 mm
Weight	2.6 kg
Part no.	1100364

E-FORCE TRANSPORT BOX



Robust PELI 1740 case for transport and storage of E-FORCE rescue tools

- with tailored foam insert
- suitable for air transport thanks to a fully automatic pressure equalisation valve
- suitable for RIT-Tool- E-FORCE3
- Suitable for RIT-Tool

Dimensions	1122 x 409 x 356 mm
Weight	12.5 kg
Part no.	1088016



DO 105 DOOR OPENER SET

**Door opener set for quick and silent breaking open of doors and lifting of loads**

- comprising hand pump, hose, door opener and case
- ultra-light DO 105 door opener with 360° rotating coupling for easy handling
- ultra-light hand pump EPH 0203 with 570 bar nominal pressure
- robust, waterproof case with integrated pressure equalisation valve in Eurobox standard dimensions 600 x 400 x 223 mm incl. insert to protect all equipment
- C 45-9 mini cutter available as optional accessory (compartment already prepared in the case)

Included in the set:	Weight	Part no.
DO 105 door opener	3.3 kg	1099556
Hand pump EPH 0203	3.3 kg	1099835
2 m black hose with SKS quick coupling system	1.2 kg	1099974
Complete set incl. case	11.4 kg	1100718

DO 105 DOOR OPENER



For rapid opening doors with complex closing mechanism

- in combination with tools such as Halligan tools
- noiseless operation with hand pump
- low weight
- single-action system
- optimized claw for strong hold in door gap

Closed length	225 mm
Extended length	330 mm
Max. lifting force	40 kN (570 bar)
Max. lifting force	49 kN (700 bar)
Weight	3.3 kg
Part no.	1099556

DO 120 DOOR OPENER



The increased lifting force enables doors with complex closing mechanisms to be opened quickly

- for use in combination with tools such as Halligan tools
- quiet operation with hand pump
- single-action hydraulic system

Closed length	278 mm
Extended length	398 mm
Max. lifting force	90.7 kN (570 bar)
Max. lifting force	114.5 kN (700 bar)
Weight	7.1 kg
Part no.	1075922

DO 140 MK2 E-FORCE3 DOOR OPENER

E FORCE



Double-action system specially developed for special applications

- fast and effective breaking open of doors
- metal doors with multiple locks and safety doors also pose no problem
- available as rechargeable battery version (battery not included)

Extended length	101 kN
Weight (ready for use)	13.1 kg
Part no.	1101946

HAND PUMP EPH 0203

**Ultra-light hand pump**

For use in combination with single-action devices such as DO 105, DO 120 and C 45-9.

Useable oil volume	0.3 l
Delivery per stroke	1.8 cm ³
Nominal pressure	570 bar
Weight	3.3 kg
Part no.	1099835

MINI-CUTTER C 45-9

**Single-action mini cutter**

- for cutting tubes, grills, rods, etc.
- very small design
- easiest handling due to low weight and compact shape

Dimensions	267 x 66 x 88 mm
Opening width	45 mm
Round steel bar	18 mm (570 bar) 20 mm (700 bar)
Weight	3.9 kg
Part no.	1070758

CUTTER C120 MK2 E-FORCE3

E FORCE
**Cutting tool for quick subsequent cuts**

- with special space to release the cut material
- several teeth prevent the material from slipping out
- ram housing made from high-strength aluminium alloy with wear-resistant surfaces
- creates large rescue openings with mass transport systems

Opening width	120 mm
Weight (ready for use)	22.1 kg
Part no.	1105035

HALLIGAN TOOL AND ACCESSORIES



Versatile breaking and levering tool

- for easy breaking open of doors and windows
- extremely non-slip grip areas
- additional striking surface on the lever claw for confined spaces
- galvanized surface for a long service life
- **forcible entry wedge** as hammering in and opening doors
- **door hero** prevents doors from falling into the lock

Type	Weight	Part-no.
770 mm lifting claw in black	4.5 kg	1089461RIT
770 mm lifting claw	4.5 kg	1089461
920 mm lifting claw	5.0 kg	1089641
770 mm cutting claw	4.5 kg	1089642
920 mm cutting claw	5.0 kg	1089643
Forcible entry wedge	0,14 kg	WRS1076
Door Hero		1103167

BLACK PROTECTIVE BLANKET

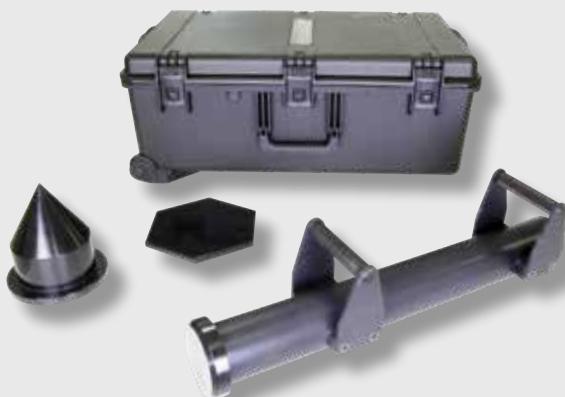


Soft protective blanket, e.g. to protect the patient from splinters, glass and dust

- ideal size for simultaneous protection of two persons
- material: Cordura 200 with a replaceable Polyglas viewing window
- outer material water-repellent, as well as resistance to wear and tear
- material can be washed at 40°C
- packaged in transport case

Dimensions	200 x 100 cm
Weight	2.85 kg
Part no.	1102507

ONE-MAN RAM



Special tool for breaking doors down quickly

- power-Shot technology for maximum effectiveness
- 90% reduction of the recoil effect
- interchangeable attachments (standard, tip, hexagon)
- in a practical carrying case incl. wheels

Weight	33.5 kg
Part no.	1087806

GLAS-EX AND CENTRE PUNCH



Versatile breaking and levering tool

- very slim and lightweight design
- narrow, curved cutting edge for easy breaking open of doors and windows
- extremely non-slip grip areas
- additional striking surface on the lever claw for confined spaces
- galvanised surface for long life

	Weight	Part no.
Glas-Ex	1.5 kg	8114161
Centre punch	0.06 kg	8027676
Spare saw blade	0.12 kg	8032858

RESCUE-LIGHT



Rechargeable battery operated lighting for precision illumination of the operation site

- rechargeable battery operated lighting with powerful LED spotlights
- each spotlight can be individually tilted and angled
- power supply via exchangeable M18™ High Output™ or M28™ Red Li-Ion™ batteries
- rubberised feet and low centre of gravity for a secure stand
- including a mount for standard tripods and carrier frames

	RESCUE-LIGHT MK2 18V	RESCUE-LIGHT MK2 28V
Battery technology	M18™ High Output™	M18™ High Output™
Output	2 x 96 W	2 x 96 W
Luminous flux	2 x 15.000 Lumen (30.000 Lumen)	2 x 15.000 Lumen (30.000 Lumen)
Dimensions	382 x 160 x 225 mm	382 x 160 x 225 mm
Weight	3.7 kg	3.7 kg
Part no.	1103439	1105363



18V BATTERY



THE NEW BATTERY TECHNOLOGY FOR THE TOUGHEST APPLICATIONS



- powerful MILWAUKEE M18™ High Output™ battery
- one battery for all applications: 20 rescue tools and more than 250 compatible Milwaukee tools
- unbeatable price-performance ratio and security of supply



BATTERY-POWERED IMPACT WRENCH 18V



extremely compact and powerful battery-powered impact wrench

- with high torque and switchable impact mechanism
- 13 mm metal quick-action drill chuck with spindle lock and low-wear carbide inserts

Weight	4.2 kg
Part no.	1104382

BATTERY RECIPROCATING SAW 18V



battery reciprocating saw for extremely fast sawing

- counterweight mechanism reduces vibration when sawing in wood
- 4-pole Milwaukee®- high-performance motor
- extensive accessories available

Weight	8.6 kg
Part no.	1101784

BATTERY CUT-OFF SAW 18V



battery cut-off saw for cutting reinforced concrete

- quieter than comparable petrol-powered devices
- exhaust-free working and immediate start
- water supply on both sides for more effective dust binding

Weight	6.9 kg
Part no.	1101791

GLAS-EX TURBO AND STEPPED DRILL



For the removal of laminated glass

- for quick removal of LSG (up to 10 mm thickness)
- suitable for all cordless drills (10 mm shank diameter)
- very agile for cutting tight curves
- most of the glass is removed to the outside
- due to the short blade and the short stroke, cuts directly above the dashboard are also possible

Weight	0.9 kg
Part no.	1095126

Heavy-duty stepped drill for metal from MILWAUKEE

- 14 steps from 6 to 35 millimetres diameter
- long service life and special geometry for easy work
- suitable for all cordless drills (10 mm shank diameter)

Weight	0.2 kg
Part no.	1100782

EXTRICATION RECIPROCATING SAW BLADES



Special saw blades with carbide teeth for high-strength steels

- reinforced blade to protect against breakage and for less vibration
- perma-Shield coating for reduced heat development
- suitable for almost all common reciprocating saws

	Part no.
EXTRICATION SET saw blades with storage pouch	
4 saw blades 150 mm / hard metal teeth	1078478
6 saw blades 230 mm / hard metal teeth	
Saw blade 150 mm	1078476
Saw blade 230 mm	1078477

EXTRICATION RECIPROCATING SAW BLADES



Cutting disc SET RESCUE

- set of 3 cutting discs with 230 mm
- in practical transport bag

	Part. no.
Cutting disc SET RESCUE in folding bag consisting of	1103427
5 x 230 mm standard metal cutting disc	
1 x 230 mm diamond cutting disc for brick, concrete, stone	
1 x 230 mm diamond cutting disc for stainless steel and steel	

WEBER-HYDRAULIK GMBH

Heilbronner Straße 30
74363 Güglingen, Germany
Phone +49 7135 71-10270

Emil Weber Platz 1
4460 Losenstein, Austria
Phone +43 7255 6237-0

info@weber-rescue.com
www.weber-rescue.com



@weberrescue

WEBERRESCUE
SYSTEMS